



My Therapy Crew

CREW VALUE PROPOSITION



Hi there!

So you are thinking of joining our crew?

OUR VISION

**IS TO MAKE A POSITIVE
IMPACT IN THE LIVES OF OUR
CLIENTS AND CREW.**

BECAUSE OUR 'WHY' IS TO SEE PEOPLE FLOURISH.

IN OUR CREW, WE HAVE



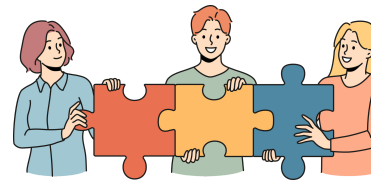
**AWESOME
AHA'S**



**ATTENTIVE
ADMIN**



**OPTIMISTIC
OT'S**



**PASSIONATE
PHYSIO'S**

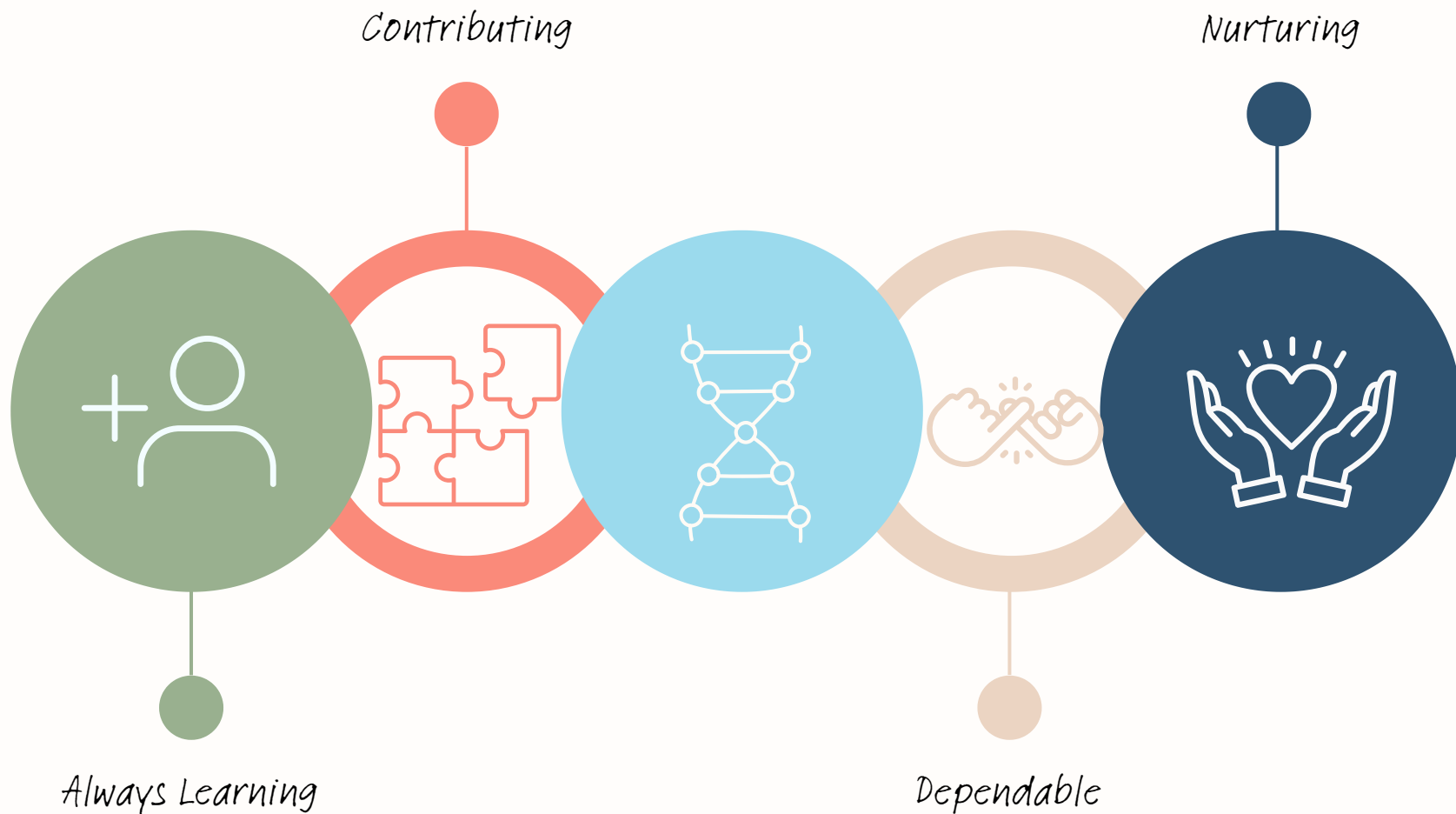


**SENSATIONAL
SPEECHIE'S**

*We have a strong and diverse multidisciplinary team so that
we can provide holistic care to our clients.*

Our DNA is

Our Values





A PACKAGE TIED UP WITH STRING

PAY PACKAGE

Our vision drives us to see our crew flourish, and so we share our financial wins with our crew including competitive salary and participation in our staff bonus and referral program.



PATHWAYS

We have a structured career progression program for all our crew to support the achievement of their career goals.



PROGRESSION

Our crew is well supported from the top down and from the bottom up through regular in-house training, generous supervision, focused mentoring and other CPD allowances.



PLENTITUDE

We provide opportunities for TOIL and flexible working arrangements, insurance, mileage and tolls, catered lunches, quarterly crew focus days and opportunities to attend special events.



We #contribute

We #contribute to our community and professions through charitable endeavours and participating in industry events. We also have strong links to the local universities and host students regularly.

We are all #always learning

We have generous CPD and supervision allocation to help you flourish! As well as regularly hosting students and having a streamlined **graduate program!**

Emphasis on workplace culture

We've developed a warm workplace culture by living out our values. By providing little flourishes like snacks galore, catered lunches, great coffee and counselling support, our crew enjoy a happy and productive environment with a reasonable 5H KPI per day.

MultiDisc crew with A&A support

We are a well-rounded crew from a range of backgrounds and years experience making holistic care possible!

Why join our crew?

Flexibility


Your crew is an extension of our crew! We take a flexible approach to working hours and locations to ensure that your crew is considered.

Crew building

We work hard and we play hard! Once a week we lunch together and once a quarter we go off-line and have a crew day!

Family owned and run

Family-life, we get it! And whats more, we value it! MTC boast in a great partnership of being both clinician (Judy) and business (Matt) led and balanced by valuing your crew.



*So, do you like the sound of a rewarding and
fulfilling career with My Therapy Crew?*

**Because we need more
hands on deck!**

*Contact us today to see how you
can join our crew!*





My Therapy Crew

admin@mytherapycrew.com.au

www.mytherapycrew.com.au

07 3139 1202

See you soon...